



Hospital Management System



Objective

- To make the existing system more efficient in its present environment.

Abstract

1. Registration

2. Inventory

3. Room Management

4. Billing

Registration

- Deals with in-patient and out-patient details.
- Searching is done based on
RegNo.
Name.
- Reports generated are
Patient's details.
Patients registered in the hospital.

Room Management

- Has 2 processes
 - **Admission** – Allocation of room for the patients.
 - **Discharge** – Calculating room charges.
- Contains info. on room type, availability of rooms & its location.
- Determines the charge of the room based on its type.

Inventory

- Has 3 processes
 - **Order** - deals with the products ordered to the companies.
 - **Purchase** - deals with the products purchased, product details and stock present.
 - **Issue** - Issuing of medicine to patients.
- Contains supplier & customer info.

Billing

- Has info. on
 - **Lab charges** – lab / test names and its charges.
 - **Doctor's consultation fees** – name of the doctor and their consultation fees.
 - **Drugs issued** – detail about the drugs issued to patient, quantity and total cost.
 - **Room charges** – no. of days admitted and room charges.



System Specification

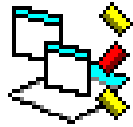
- **Hardware Requirements**
- **Software Requirements**

Hardware Requirements

- Processor
 - Pentium IV
- Memory
 - 128 MB RAM
- Video
 - VGA Monitor
- Disk storage
 - 40 GB
- Keyboard
 - 107 Standard keys
- Mouse
 - 2 Button Mouse
- Printer
 - Dot Matrix

Software Requirements

Front-End :



Visual Basic 6.0

Back-End :



MS SQL Server 2000

Visual Basic 6.0

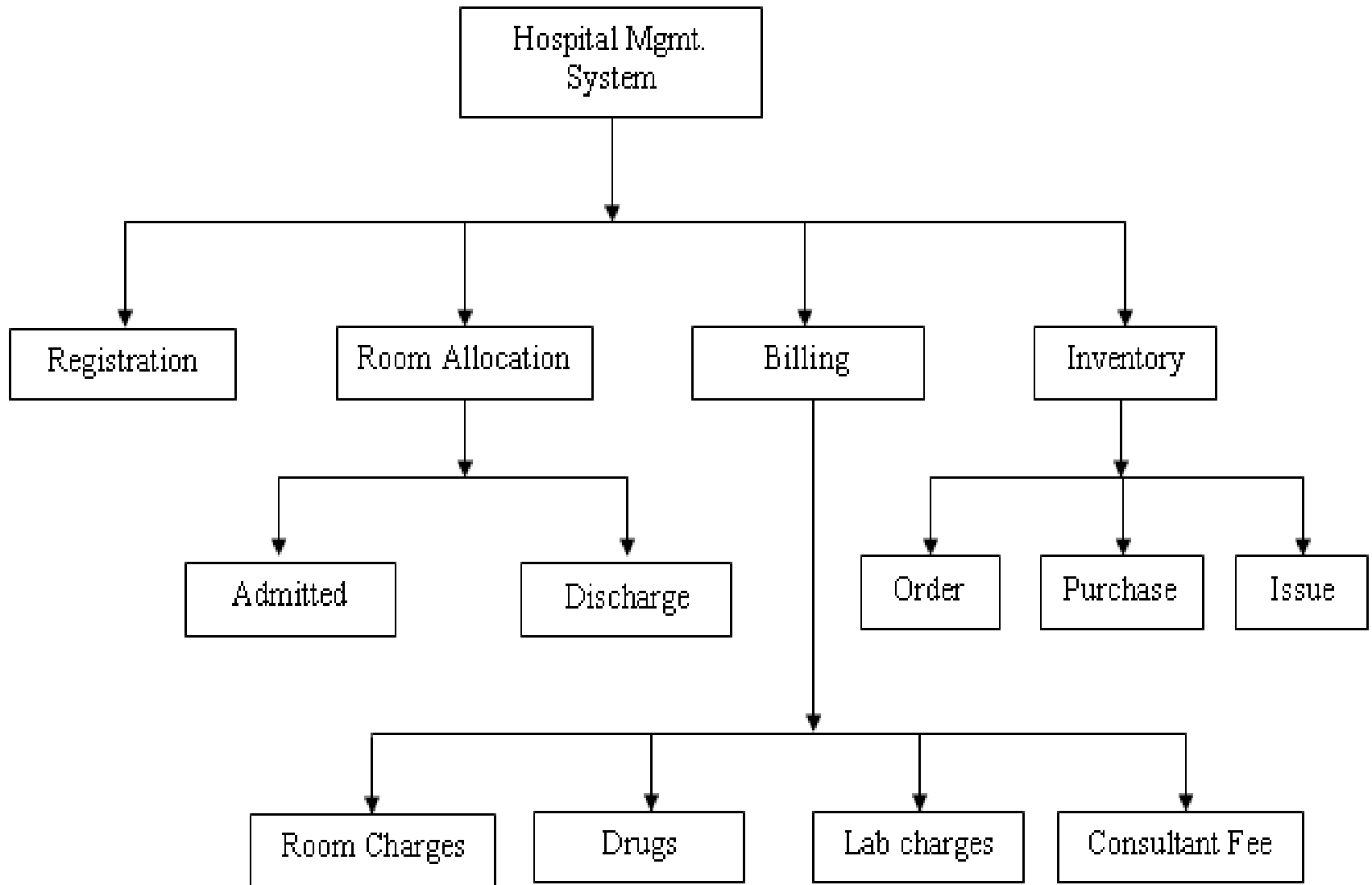
Adapted features	Description
MDI form	A frame for displaying child forms.
Menu editor	For creating user friendly environment.
Module	Connecting to database, for defining the resultset and for validation.
Listitem	for displaying required fields on the form.
Dtpicker	For selecting date and time.
Microsoft Remote data object	Added as a reference for using RDO.

MS SQL Server 2000

Adapted features	Description
Import and Export data	Transfer of tables in database.
Management	Maintaining and increasing the size of database as when required.
Client/Server architecture	Accessing the database by more than one user
Security	Giving permission for accessing the tables to various users.



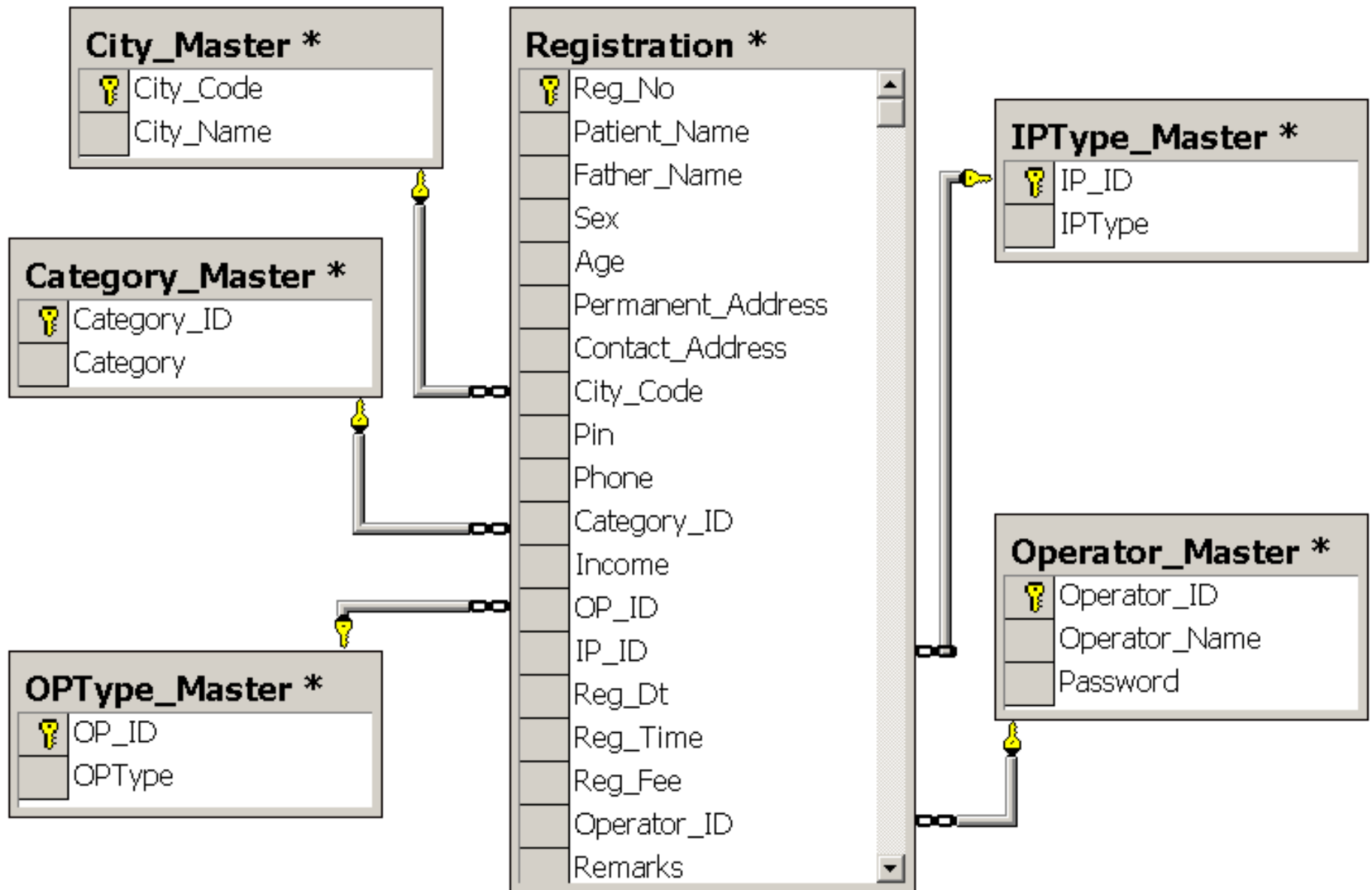
Structured Chart



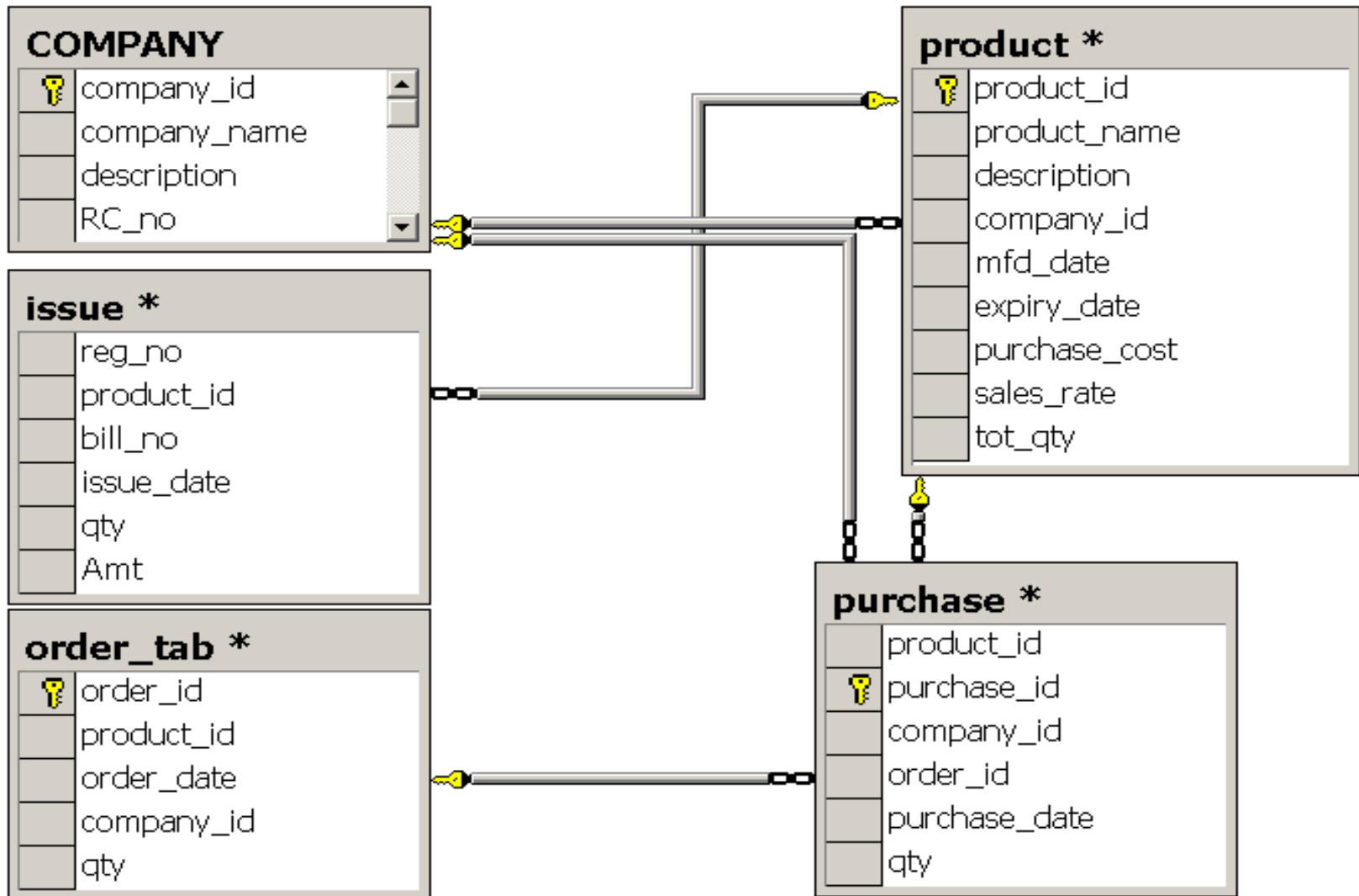


Database & Relationship Diagram

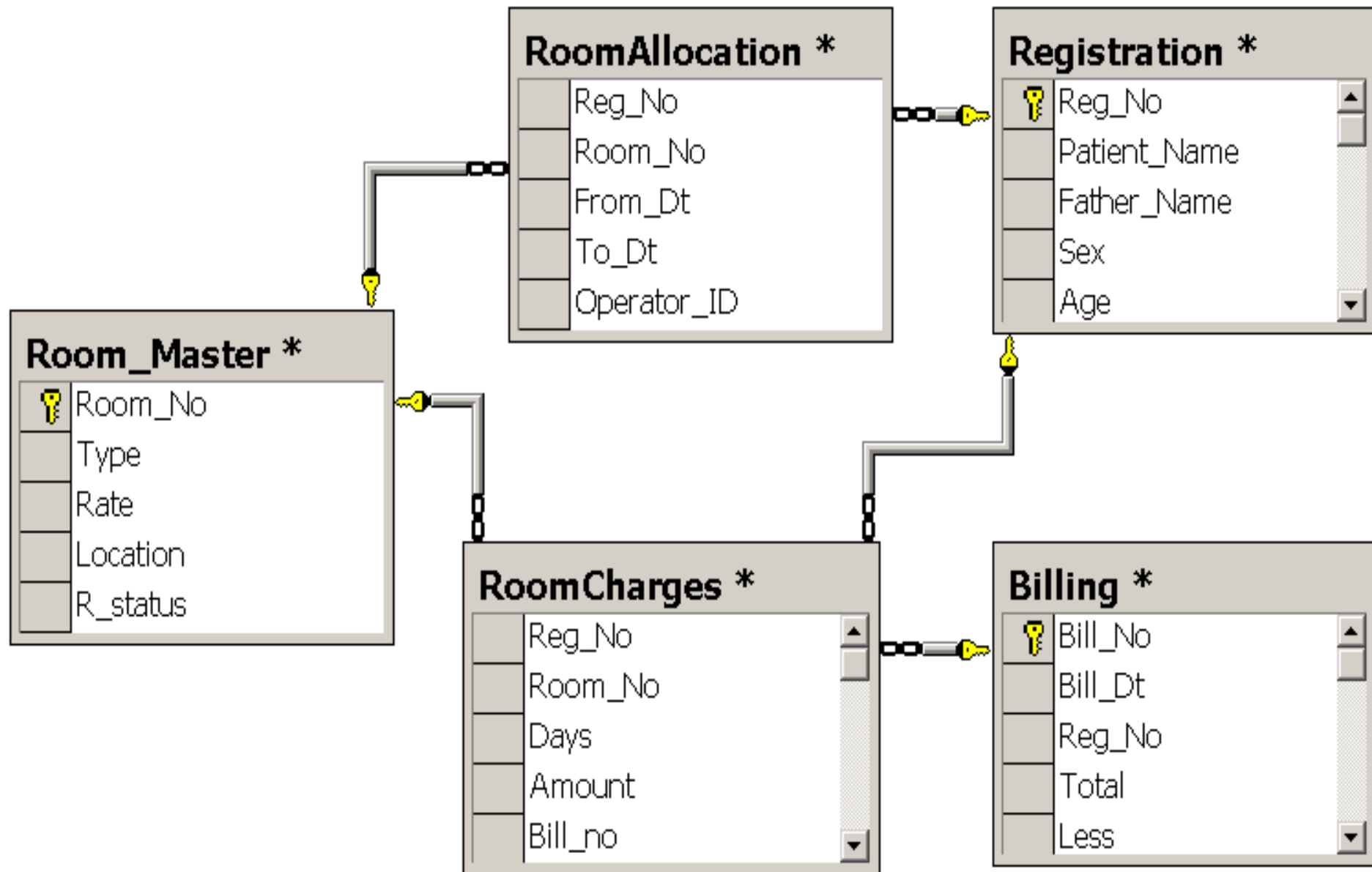
Registration



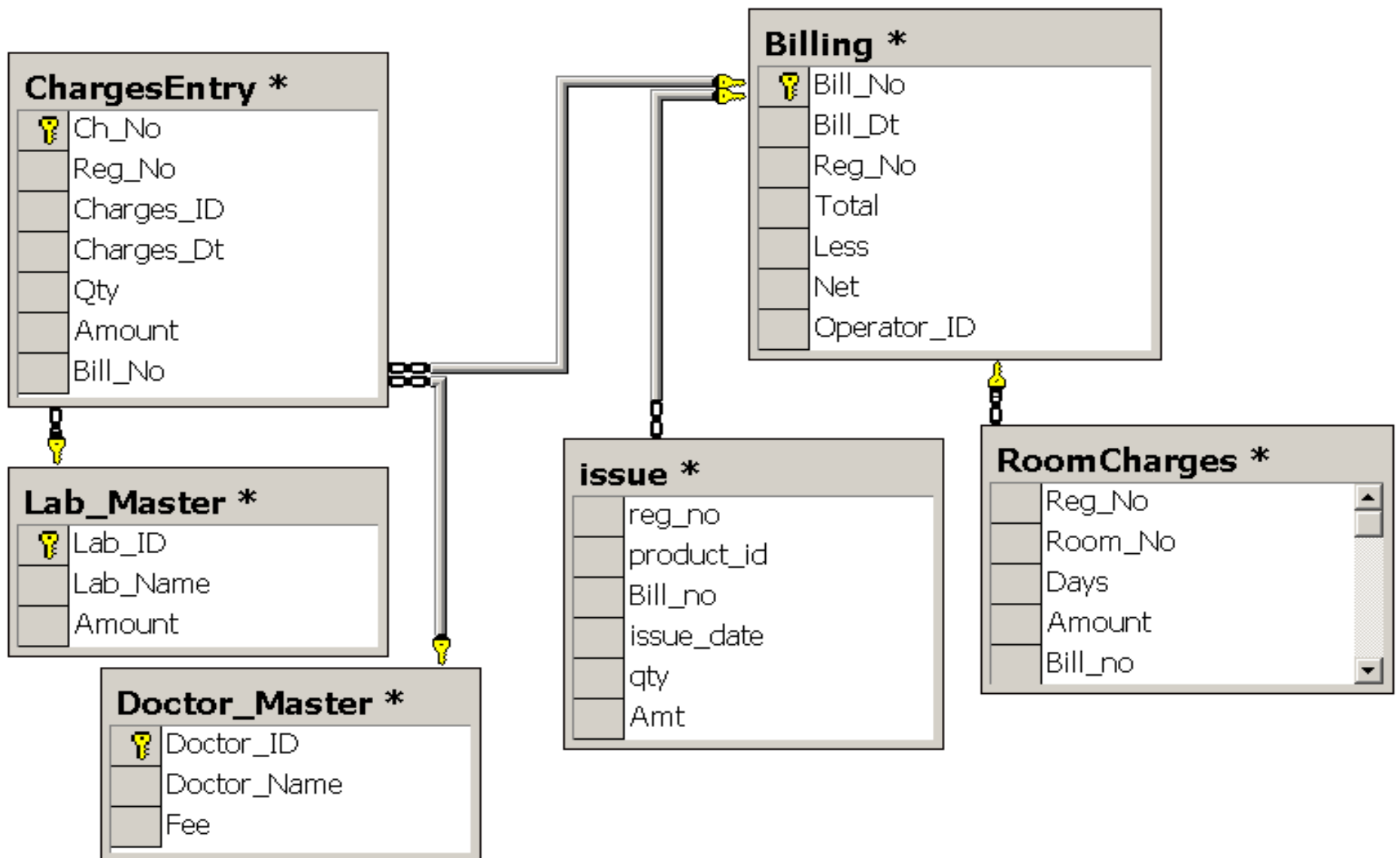
Inventory



Room Management



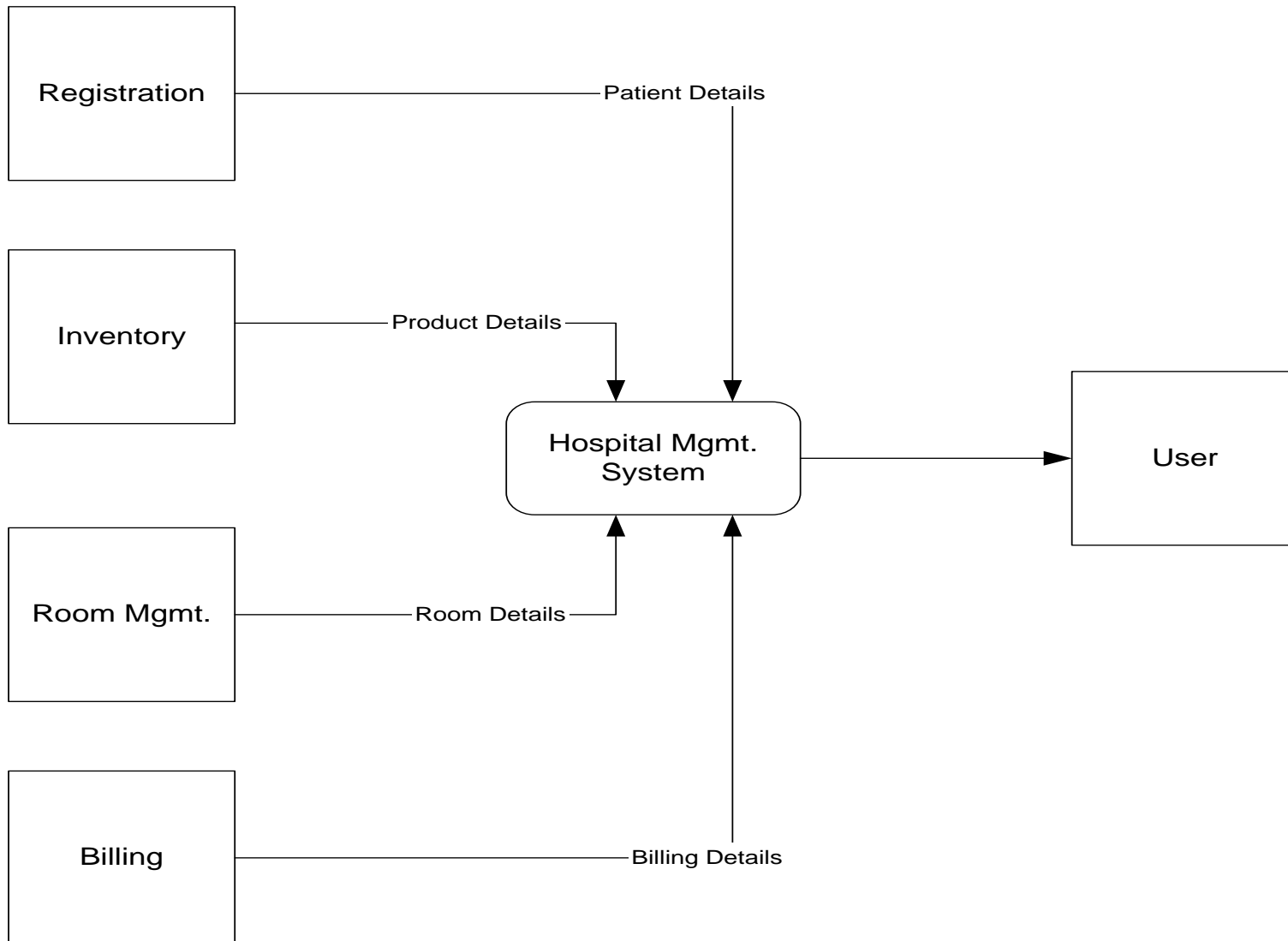
Billing



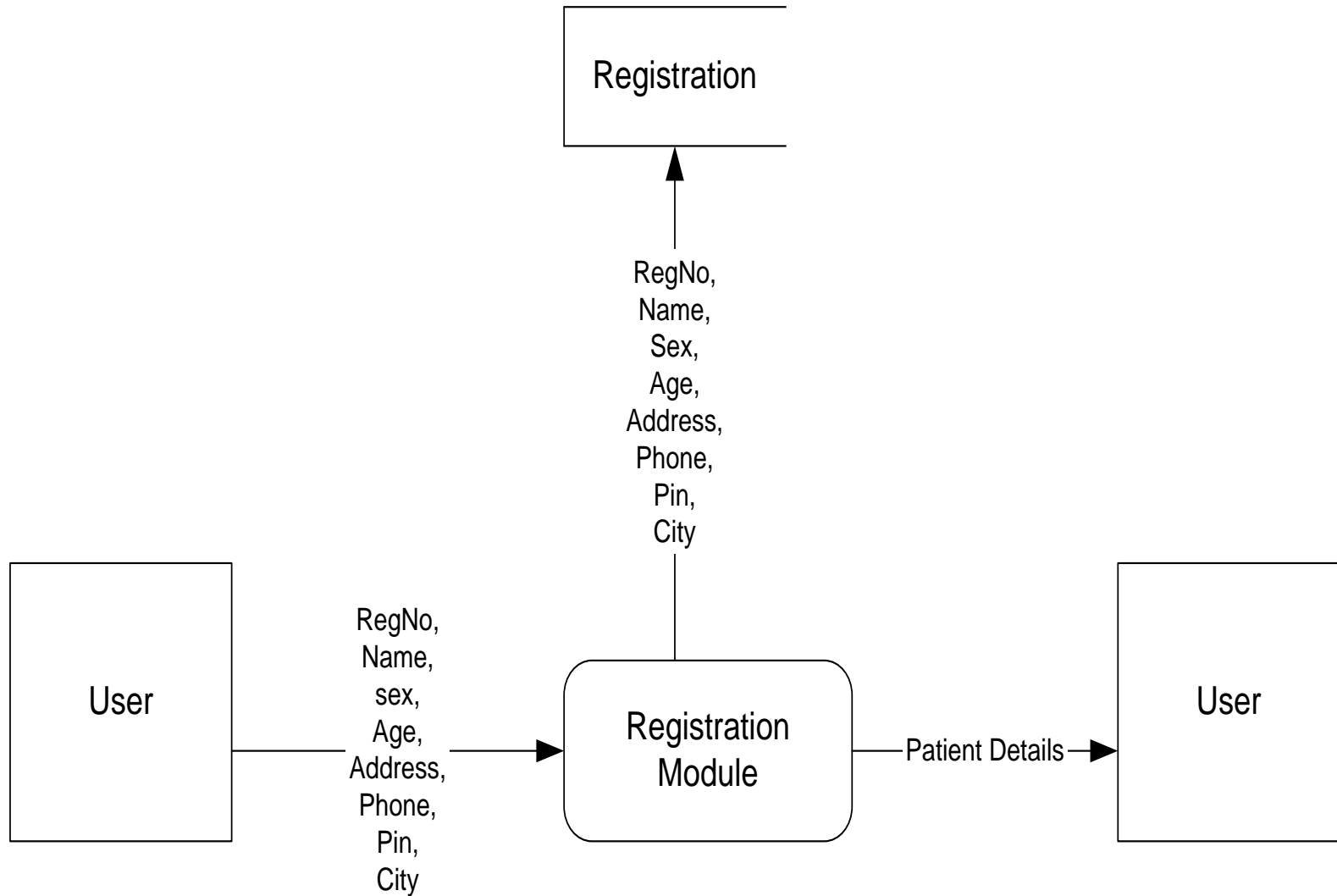


Data Flow Diagrams

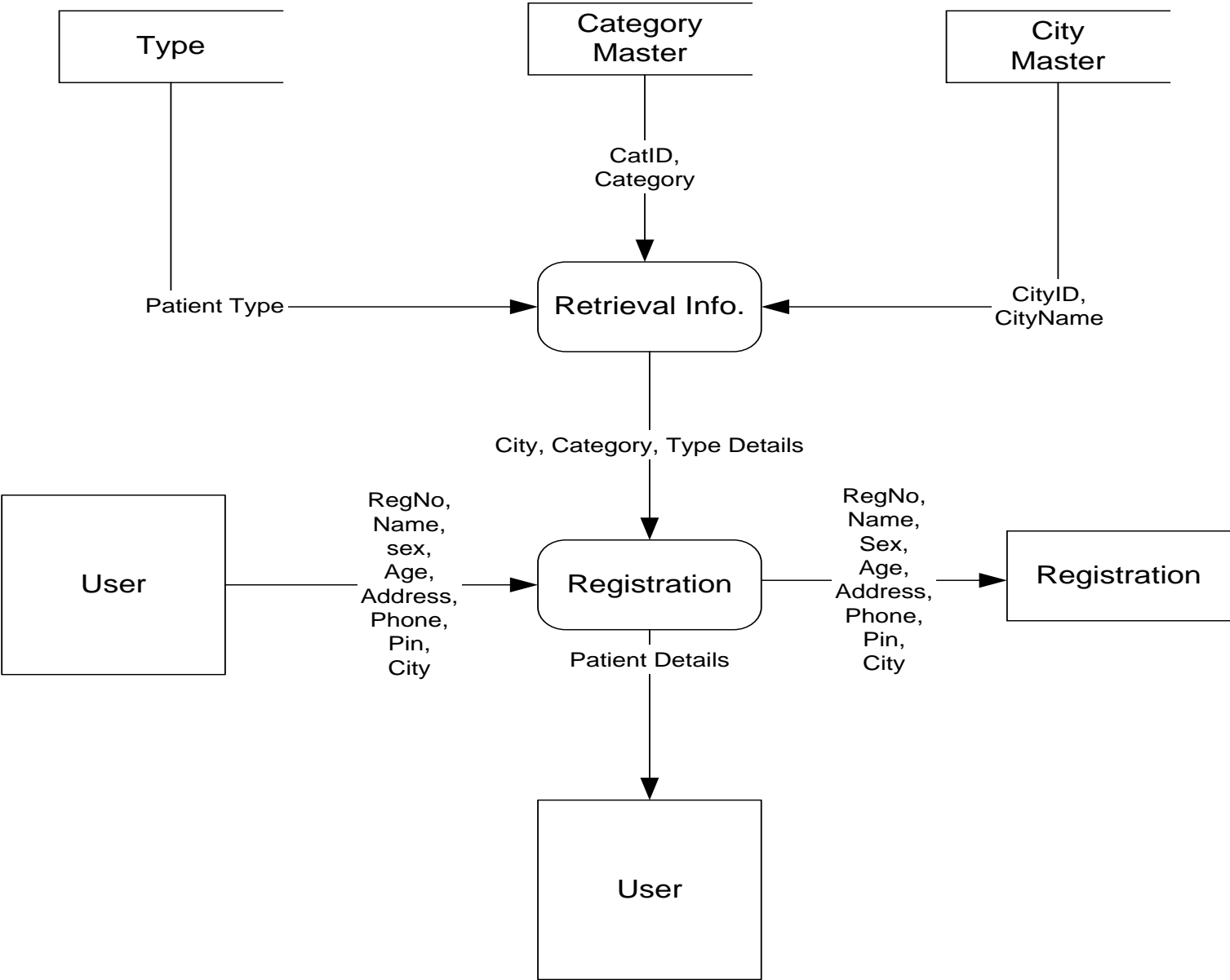
Hospital Management System - Overview



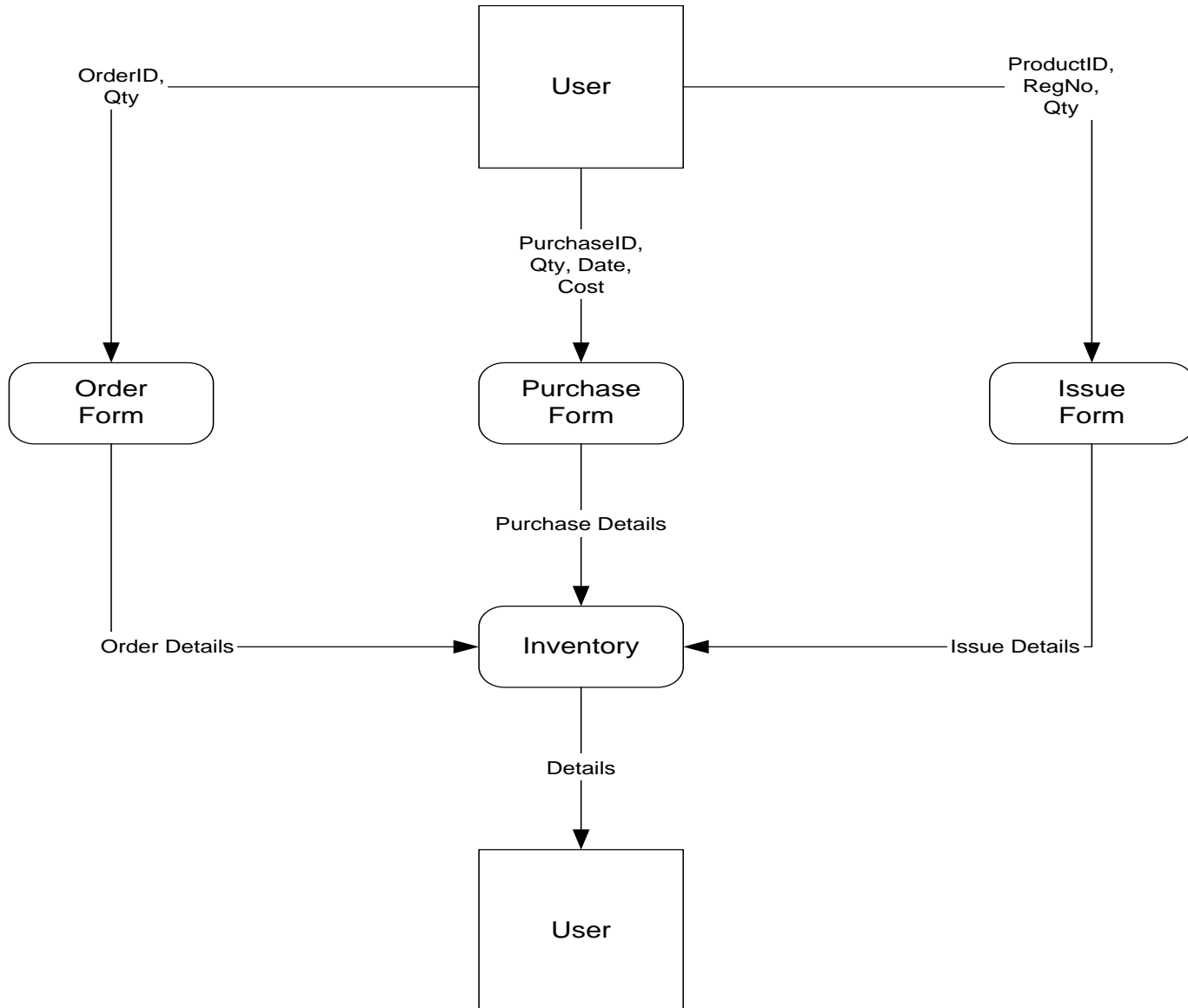
Registration Module



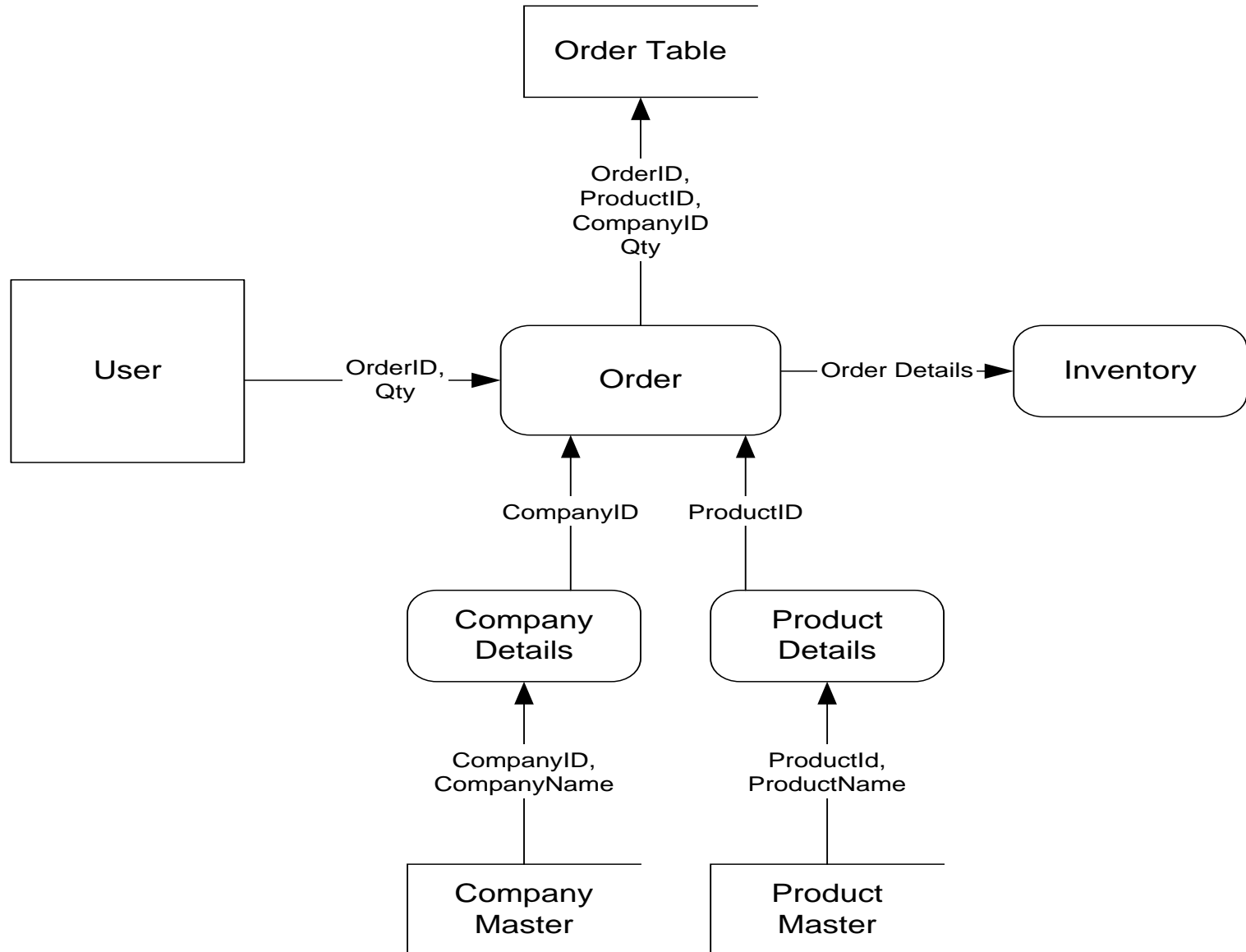
Registration Module - Detailed



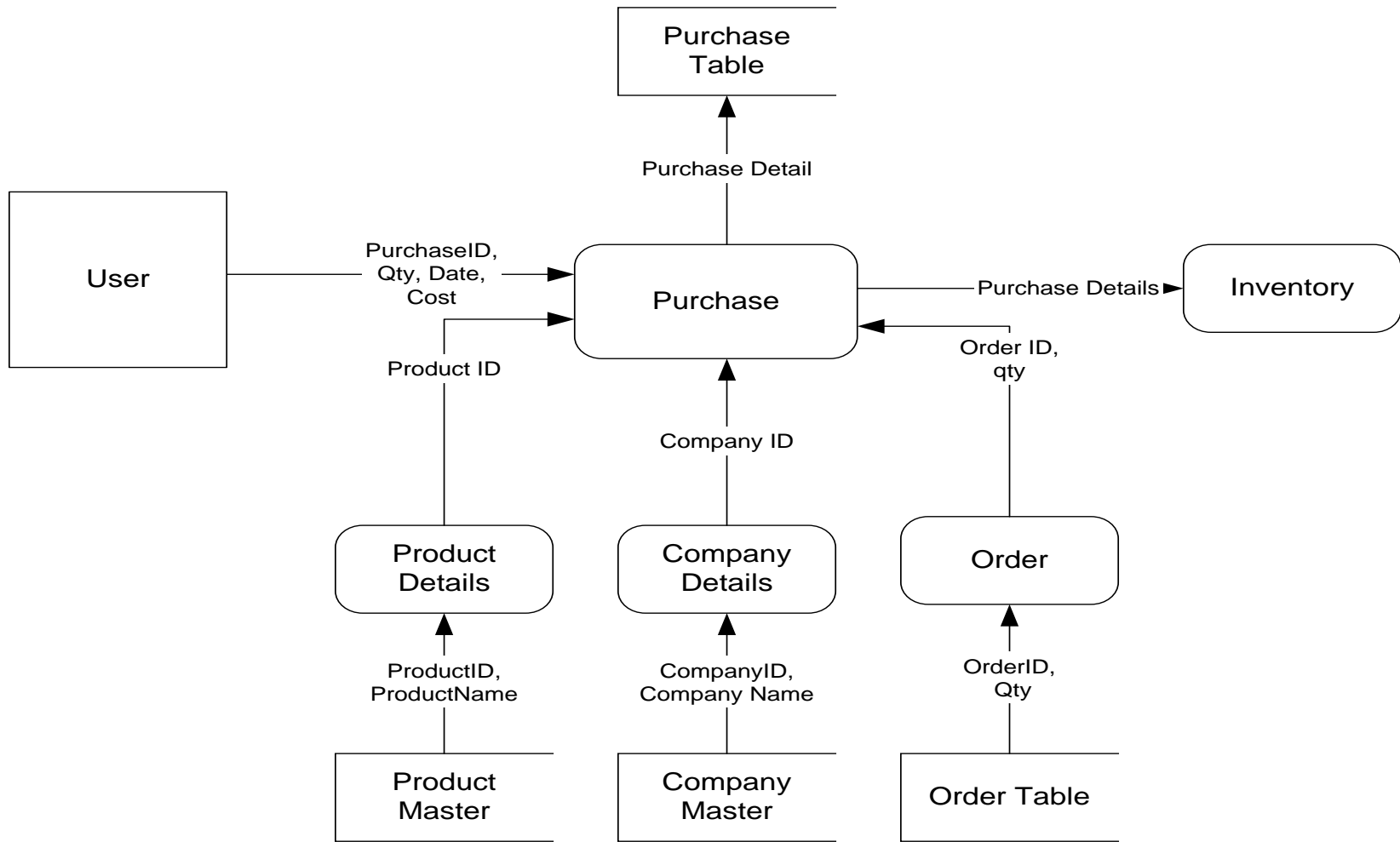
Inventory Module



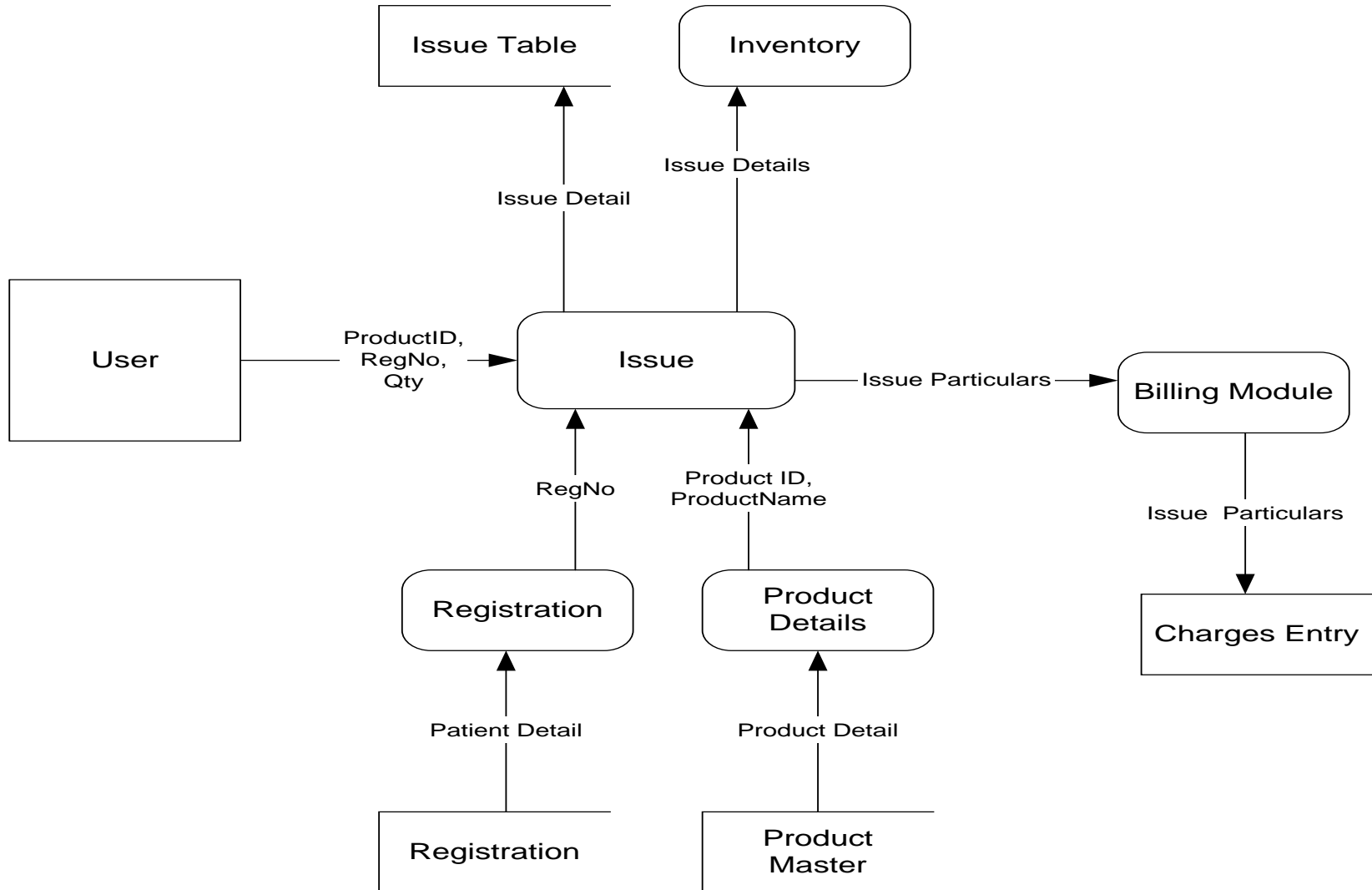
Inventory Module - Order



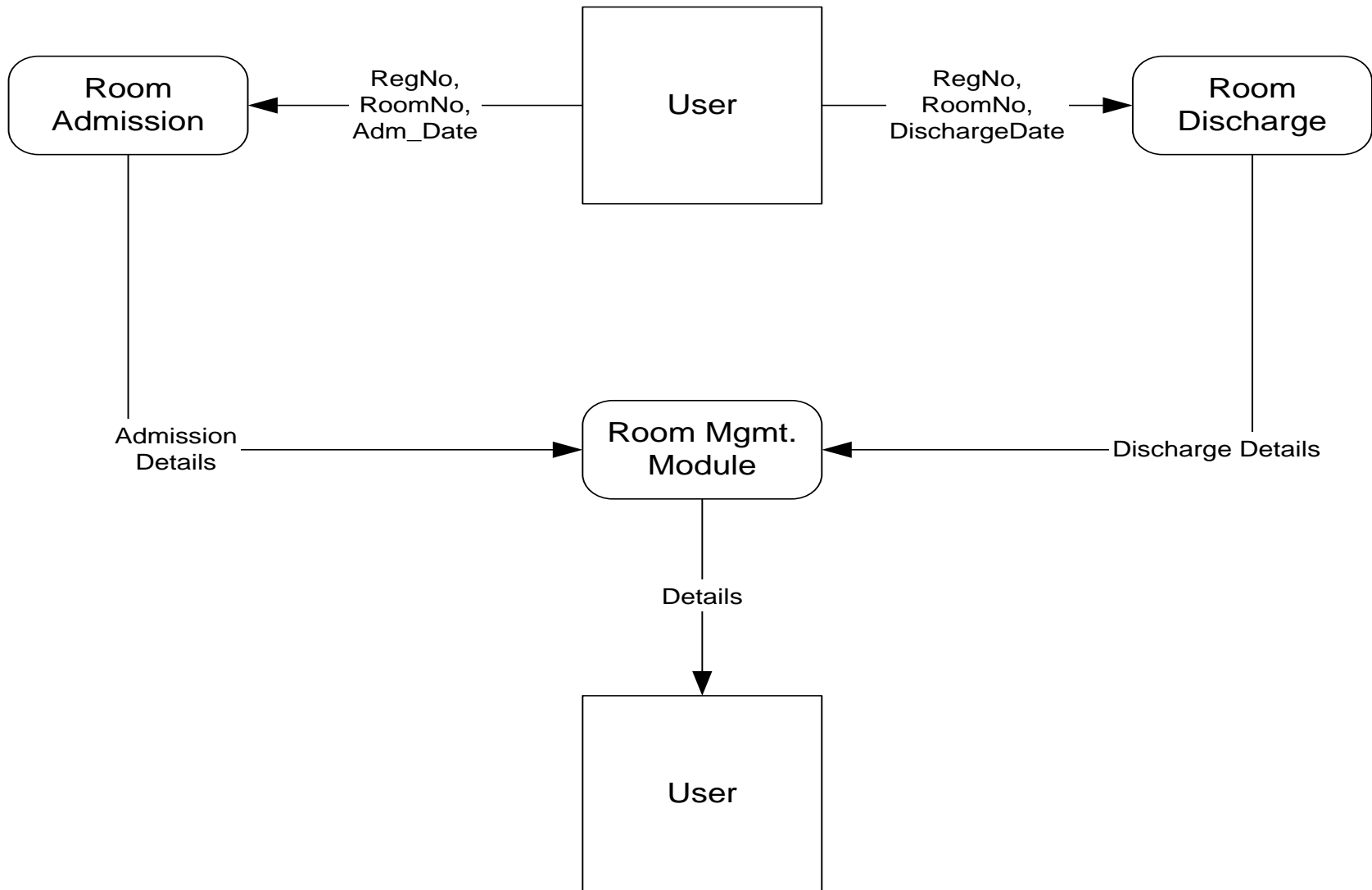
Inventory Module - Purchase



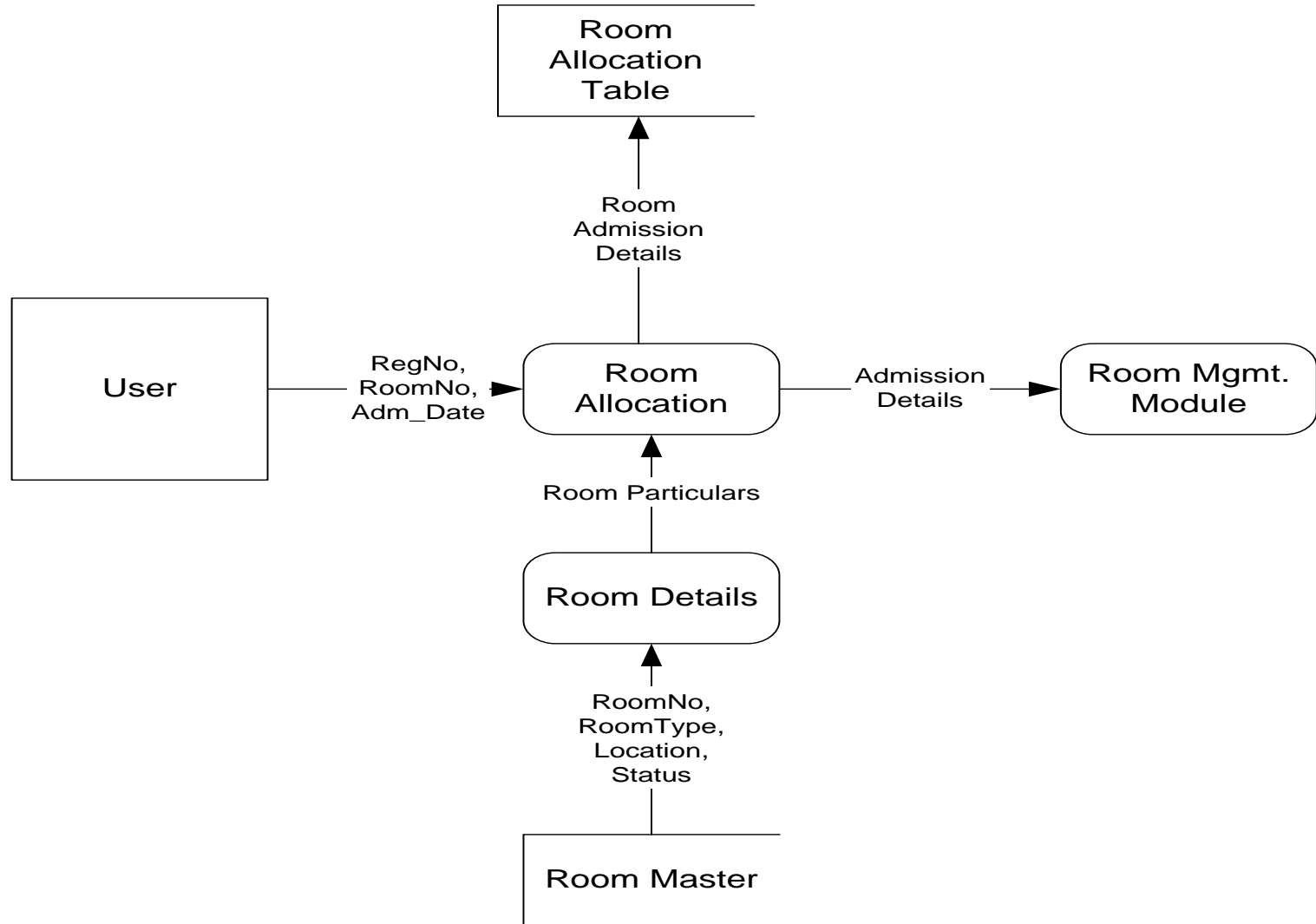
Inventory Module - Issue



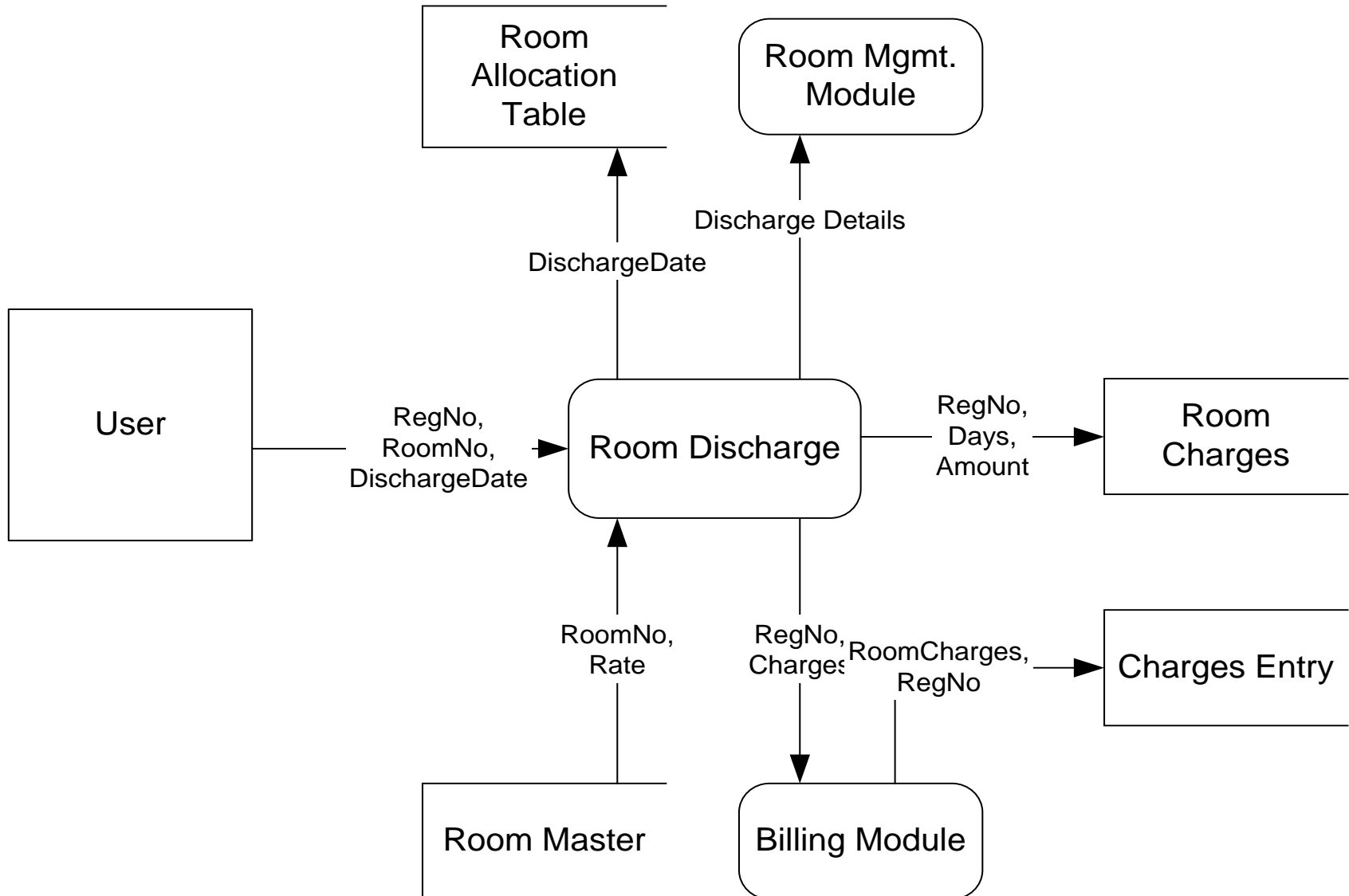
Room Management



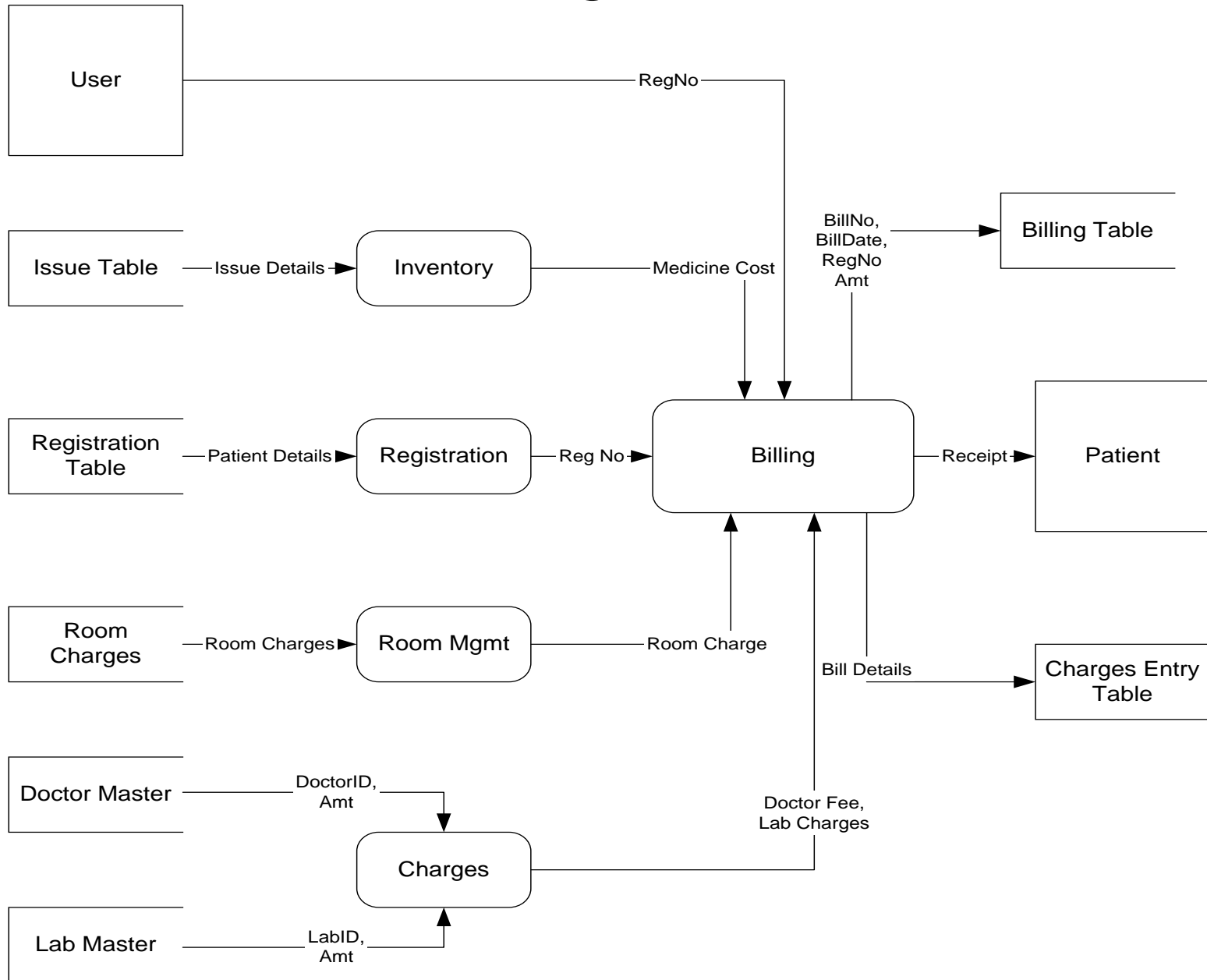
Room Management - Admission



Room Management - Discharge



Billing Module



T

H

A

N

K

Y O U

